

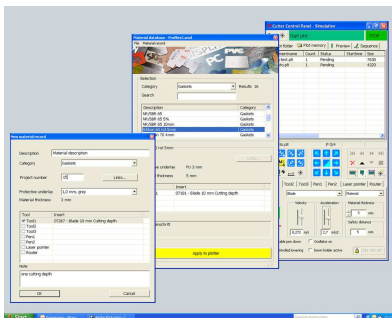
MultiHead V

Automatic, 7 Tools, Z-Axis

The fifth MultiHead generation **A5z** and **A7z** sets new standards in ARISTO's tool head family.

- up to 7 tools
- controlled depth adjustment
- height sensor
- process database
- Automatic Eye intelligence

Up to seven already set tools, an integrated, controlled depth adjustment (Z-axis) and software-controlled pressure for each tool position provide the user with the possibility of executing varying process steps without further intervention.



The table surface and material thickness are automatically recorded by a height sensor.

The efficiency is additionally increased by the access to a database. The setup for an already stored process is only a click away; the storing is carried out dialogue-controlled after the process run. The

setting up of new processes is shortened due to the database and the operating efficiency of the ARISTO Cutter is so consequently increased.

A controlled depth adjustment enables the using of optimal process parameters. Very tough materials can so be depth controlled processed.

For the recognition of fiducials, the MultiHead V can be fitted with the camera system Automatic Eye; this increases the level of automation and rounds off the performance.

The MultiHead V is available for all ARISTOMAT GL and TL machines.



Graphic & Design



Packaging/Displays



Gaskets



Composites

Specifications MultiHead V

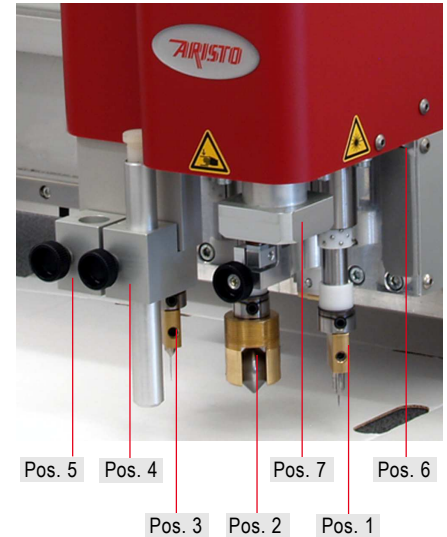
Controlled depth adjustment Electronic controlled move to one or more process depths. For tool positions 1 to 3 separate settings.

Height sensor Automatic table surface and material thickness recording

Process database Saving process parameters according to material type

Up to 7 tools

Tool position 1	electro-mechanical oscillating ; for blades, tangentially controlled, lifting and lowering pneumatically; pressure 180 N, down holder up to 35 N noise level approx. 73,5 dB(A)
Tool position 2 ^①	fixed ; for blades, punching blades, hole puncher or creasing wheels, tangentially controlled, lifting and lowering pneumatically; pressure adjustable depending on direction up to 210 N
Tool position 3 ^①	the same as tool position 2, but pressure up to 140 N
Tool position 4 ^②	marking device for pens (ball point refill, fibre tipped pen LUMICOLOR), dragging knife
Tool position 5 ^②	2nd marking device for pens (the same as tool position 4)
Tool position 6	integrated laser pointer as origin pointer, fitting-in assistant and for the simulation mode
Tool position 7 ^②	integrated color camera for Automatic Eye system



Cutting depth up to 50 mm (2 in)^③

Compressed air necessary 8 bar (116 PSI) regulated, pulse-free, water and oil-free

① Only MultiHead V A7z ② Option ③ Depending on the machine type, protective underlay and process

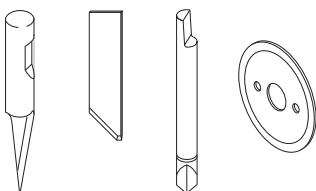
Choice of material

- cardboard
- corrugated cardboard
- cartons
- laminates
- PUR-foam
- printing blankets
- coating plates
- preprinted vinyl films, reflective sheetings
- textile and technical fabrics
- soft, elastic and metal-reinforced gasket materials and others

Various tools

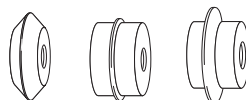
Cutting

e.g. blades, flat blades, circular blades and others



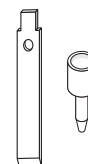
Creasing

e.g. for corrugated cardboard, cardboard, plastics and others



Punching

punching blade, hole puncher



Marking

ball point refills, fibre tipped pen

